

Model

400 Series

TELESCOPIC BOOM LIFTS

Features

Articulating Jib
(460SJ only) 6 ft (1.83 m)

Platform
Side Entry 36 x 96 in. (0.91 x 2.44 m)

Inward Self-Closing Swinging Gate

180 Degree Hydraulic Platform Rotator

Platform Console Machine Status Light Panel*

110V-AC Receptacle in the Platform

5 Degree Tilt Alarm/Indicator Light

12 x 16.5 Rim Protector Lug Tread Tires

Swing Out Engine Tray

12V-DC Auxiliary Power

Hourmeter

Proportional Controls

Control ADE® System

Lifting/Tie Down Lugs

Horn

Oscillating Axle

Operator Tool Tray

Motion Alarm

Glow Plugs (Deisel Engines)

* Provides indicator lights at platform control console for system distress, low fuel, 5 degree tilt light, and foot switch status.

Accessories & Options

750 lb (340 kg) Unrestricted Capacity
with 1,000 lb (450 kg) Restricted
Capacity (400S Only)

36 x 72 in. (0.91 x 1.83 m) Platform

1/2 in. Air Line to Platform

Soft Touch System

14 x 7.5 Lug Tread Tires

Foam-Filled Tires

High Flotation Sand/Turf Tires (4WD Only)

2500W Generator

Tow Package (2WD Only)

Flashing Amber Beacon

43.5 lb (19.73 kg) Propane Tank

Cold Weather Kit

Hostile Environment Kit

Arctic Package

Semi-Trak

Light Package

Platform Worklights

Special Hydraulic Oils (Consult Factory)

Catalytic Muffler

Accessories

SkyPower® Package

SkyWelder® Package

SkyCutter® Package

SkyGlazier® Package (400S only)

Nite Bright® Package

SkyAir® Package (requires SkyPower)

SkyCutter and SkyAir Package

SkyWelder/SkyCutter/SkyAir Combination
(requires SkyPower)

PipeRack

Note: Some options may increase lead time, and some option combinations may not be available.



Increased Productivity

- The fastest lift and drive speeds in their class
- Reaches up to 3.5 ft (1.07 m) further than competitive models
- Improved rough terrain capabilities with 45% gradeability

Enhanced Control

- Exclusive Control ADE® (Advanced Design Electronics) system for better performance with improved serviceability
- Control ADE system allows function speeds and options to be customized to meet customer preferences
- Provides better fuel efficiency and reduced emissions

Improved Maintainability

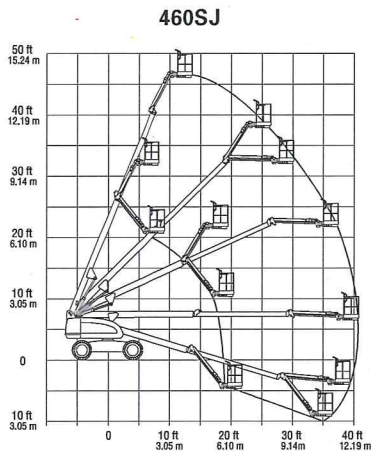
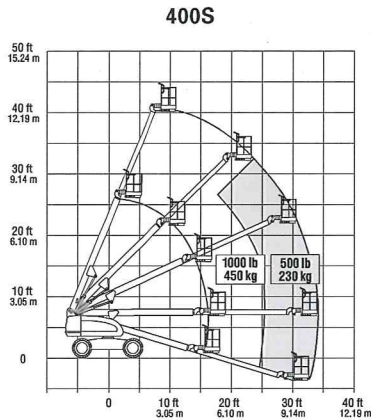
- Enhanced electrical system minimizes the number of wires and connections
- The Control ADE system reduces troubleshooting time and identifies potential problems
- Swing-out engine tray provides ease of access

JLG



Model 400 Series TELESCOPIC BOOM LIFTS

Specifications



Reach

Platform Height	
400S	40 ft 4 in. (12.3 m)
460SJ	46 ft (14.02 m)
Horizontal Outreach	
400S	34 ft 7 in. (10.4 m)
460SJ	41 ft. (12.49 m)
Swing	360 Degrees Continuous
Platform Capacity	
Restricted (400S)	1,000 lb (450 kg)
Unrestricted	500 lb (227 kg)
Optional	750 lb (340 kg)
Platform Rotator	180 Degrees Hydraulic
Jib (Range of Articulation)	
460SJ	6 ft (1.83 m), 130 Degrees (+70, -60)
Lift/Lower Speed	29/22 seconds

Dimensions

A. Platform Size	36 x 96 in. (0.91 x 2.44 m)
B. Overall Width	7 ft 6.5 in. (2.30 m)
C. Tailswing	2 ft 10 in. (86 cm)
D. Stowed Height	7 ft 10 in. (2.39 m)
E. Stowed Length	
400S	24 ft 9 in. (7.54 m)
460SJ	29 ft (8.84 m)
F. Wheelbase	7 ft 8 in. (2.34 m)
G. Ground Clearance	
Standard Tires	12.5 in. (32 cm)
14 x 17.5 Tires	13.5 in. (34 cm)
Weight*	
400S	12,650 lb (5,738 kg)
460SJ	15,850 lb (7,189 kg)
Max. Ground Bearing Pressure	58 psi (4.06 kg/cm ²)

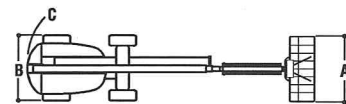
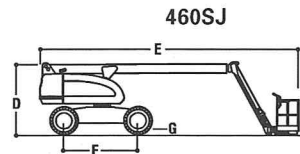
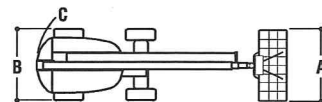
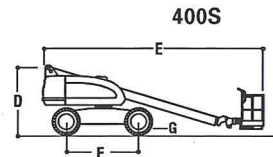
Chassis

Drive Speed 2WD/4WD	4.5 mph (7.2 kph)
Gradeability	
2WD	30%
4WD	45%
Turning Radius	
Outside	16 ft 5 in. (5.0 m)
Inside	6 ft 7 in. (2.0 m)
Tire Size/Type	
Standard	12 x 16.5 Pneumatic
Optional	14 x 17.5 Pneumatic

Power Source

Dual Fuel Engine	
GM Vortec 3000 MPFI	82 hp (61 kW)
Diesel Engine	
Perkins 404C-22	49 hp (36.5 kW)
Diesel Engine	
Caterpillar C2.2	49 hp (36.5 kW)
Fuel Tank Capacity	26 gal. (98.5 L)
Hydraulic Reservoir	42 gal. (159 L)
Auxiliary Power	12V DC

* Certain options or country standards will increase weight.



The JLG "1 & 5" Warranty

JLG Industries, Inc. backs our 400 Series boom lifts with our exclusive "1 & 5" Warranty. We provide coverage for one (1) full year, and cover all specified major structural components for five (5) years. These machines meet or exceed applicable OSHA Regulations in 29 CFR 1910.67, 29 CFR 1926.453, ANSI A92.5-2000 and CSA standard B354.4-02 as originally manufactured for intended applications. We reserve the right to make price, specification, and/or equipment changes without prior notification.



JLG Industries, Inc.
1 JLG Drive
McCConnellsburg, PA 17233-9533
Telephone 717-485-5161
Toll-free in US 877-JLG-LIFT
Fax 717-485-6417
www.jlg.com
An Oshkosh Corporation Company

Form No.: SS-400S-0107-10M
Part No.: 3131026
R110805
Printed in USA